



## Geraldine R. Dill

September 4, 1928 - December 11, 2015

Geraldine R. Dill, age 87 of Rensselaer, passed away Friday, December 11, 2015 at the Oak Grove Christian Retirement Village in DeMotte. Geraldine was born in Rensselaer, Indiana on September 4, 1928, the daughter of Colleta (Kohley) and Fred Joseph Feldhaus.

On November 20, 1946, Geraldine married William “Bill” Dill in Rensselaer, Indiana. He passed away on October 28, 2005. She graduated from Rensselaer High School, the Class of 1946. Geraldine retired from the Clinic of Family Medicine in Rensselaer where she worked as a Medical Secretary. She also served as an assistant to Dr. Curry for 5 years. She and Bill formerly managed and operated the dining room at the Curtis Creek Country Club. A life-time member of the Club, Geraldine embraced the opportunity to serve as an event planner during this tenure. Together, they also owned and managed the former Dog ‘n Suds in Rensselaer. She was a member of St. Augustine Catholic Church, a companion of the Missionaries of the Precious Blood and a former member of the Red Hat Society and Tri Kappa Sorority. She was a St. Joseph’s College Fellow and remained very active in her church and St. Augustine Catholic School for as long as she could.

Geraldine is survived by her loving children: Jean (Daniel) Tillema of Wheatfield, Katharine (James) Lewis of Parker City, Indiana; Steven (Sharon) Dill of Rensselaer and Patricia “Patsy” (Mike) Dean of Cincinnati, Ohio. Also

surviving is a daughter-in-law Sharon (Joe) Hardy of Champaign, Illinois, siblings, Jeanette Robinson, Genevieve Clark and Elizabeth (George) Tonner, all of Rensselaer; 14 grandchildren and 28 great-grandchildren. Geraldine was preceded in death by her parents, her husband, one son, Michael Dill, two sisters and a twin brother, Gerald.

Friends may visit with the family on Wednesday, December 16th from 9:00 AM to 12:00 PM (Central) at the Jackson Funeral Chapel of Rensselaer. A Funeral Mass will be held on Wednesday, December 16th at 12:00 PM (Central) at St. Augustine Catholic Church in Rensselaer with Father Don Davison officiating. Interment will follow at Mount Calvary Cemetery in Rensselaer. Memorials may be made to the St. Augustine Catholic School or Curtis Creek Country Club.

# Cemetery Details

## Mt. Calvary Cemetery - Rensselaer

Mt. Calvary Cemetery  
Rensselaer, IN 47978

# Previous Events

## Visitation

DEC 16. 9:00 AM - 12:00 PM (CT)

Jackson Funeral Chapel of Rensselaer  
250 N. McKinley Avenue  
P.O. Box 70  
Rensselaer, IN 47978  
(219) 866-5123  
[info@jacksonfuneral.com](mailto:info@jacksonfuneral.com)  
<https://www.jacksonfuneral.com>

## Funeral Mass

DEC 16. 12:00 PM (CT)

St. Augustine Catholic Church  
318 North McKinley Avenue  
Rensselaer, IN 47978  
(219) 866-5351  
<https://stmichaelpastorate.org/>

# Tribute Wall



“ *Jackson Funeral Chapels created a Tribute Video in memory of Geraldine R. Dill*



---

**Jackson Funeral Chapels** - December 15, 2015 at 10:24 AM

DL

“ *Dorrie Gilbert Lefler lit a candle in memory of Geraldine R. Dill*



---

**Dorrie Gilbert Lefler** - January 08, 2016 at 09:38 AM

FS

“ *Jean, my condolences on the passing of your mother. Prayers for you and your family and her.*

*Frank*

---

**Frank Shirer** - December 19, 2015 at 02:32 PM

BM

“ *Barb Miller lit a candle in memory of Geraldine R. Dill*



---

**Barb Miller** - December 17, 2015 at 05:21 PM

TM

“ *Kathy, Jim and family.....I met your mother on a trip Jim, Cecil, Neil and I took to your growing up home when we went to pick up the HUGE DESK that came back to PC and remember what a wonderful , sweet woman she was. Kathy, I saw your senior picture and commented on what a beautiful young woman you were and your Mom beamed with pride. Please know that a lot of us have lost our Moms and they just get too sick to go on and so they go to a much better place...HEAVEN  
Love you all, Tim & Linda*

---

**Tim & Linda McKelvey** - December 15, 2015 at 04:17 PM

FF

“ *Fred Fedewa purchased the Beautiful in Blue for the family of Geraldine R. Dill.*

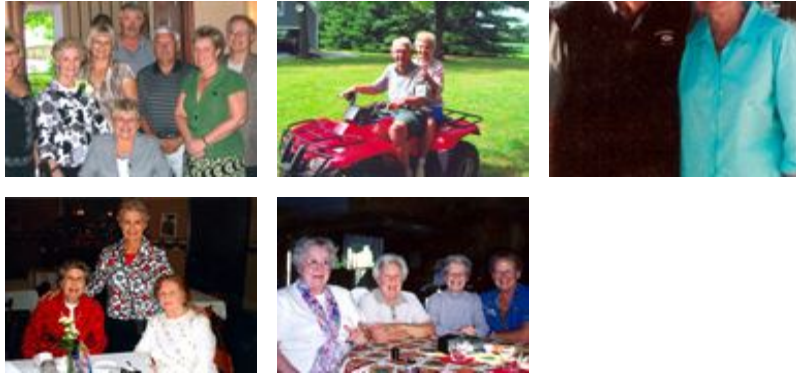


---

**Fred Fedewa** - December 15, 2015 at 11:26 AM



“ 60 files added to the album *Life Tributes*



**Jackson Funeral Chapels** - December 15, 2015 at 10:11 AM

EL

“ *Earl And Sharon Long lit a candle in memory of Geraldine R. Dill*



**Earl and Sharon Long** - December 14, 2015 at 03:38 PM

MB

“ *Myles Beeching lit a candle in memory of Geraldine R. Dill*



**Myles Beeching** - December 14, 2015 at 08:09 AM

ME

“ *Maureen Egan lit a candle in memory of Geraldine R. Dill*



-----  
**Maureen Egan** - December 13, 2015 at 11:00 PM

GN

“ *Glenda Holliday Nannenga lit a candle in memory of Geraldine R. Dill*



-----  
**Glenda Holliday Nannenga** - December 13, 2015 at 09:40 PM

TC

“ *The Men of Delta Upsilon, Indiana Chapter purchased the Florist Choice Bouquet for the family of Geraldine R. Dill.*



-----  
**The Men of Delta Upsilon, Indiana Chapter** - December 13, 2015 at 08:43 PM

CS

“ *Carol Gerline Studer lit a candle in memory of Geraldine R. Dill*



-----  
**carol gerline studer** - December 13, 2015 at 07:25 PM

CS

“ *Carol Gerline Stider lit a candle in memory of Geraldine R. Dill*



---

**carol gerline stider** - December 13, 2015 at 07:23 PM

BF

“ *Bethel Ford lit a candle in memory of Geraldine R. Dill*



---

**Bethel Ford** - December 13, 2015 at 06:30 PM

JG

“ *Jerry Gwin' lit a candle in memory of Geraldine R. Dill*



---

**jerry gwin'** - December 13, 2015 at 02:21 PM

RN

“ *Rose Nesius lit a candle in memory of Geraldine R. Dill*



---

**Rose Nesius** - December 13, 2015 at 02:17 PM



“ *Linda Hughes lit a candle in memory of Geraldine R. Dill*



---

**Linda Hughes** - December 13, 2015 at 11:06 AM



“ *Always a lady....fond memories of a sweet sweet lady. My prayers and sympathy to all. Mary Ann Colvin*

---

**Mary Ann Colvin ( Jim Lewis's sister)** - December 13, 2015 at 10:59 AM



“ *Just want to say you have my deepest sympathy. I have many memories of your mom and dad. Last when we had a soup cook off at Jim and Kathy's. Your mom's sisters were all there. So much fun listening to all of them talk. Oh, and I won!  
We will be thinking of you all. She was indeed a real lady.*

*Love, Sandy Lewis Master (Jim's sister)*

---

**Sandy Lewis Master** - December 13, 2015 at 10:33 AM



“ *Judy Burvan lit a candle in memory of Geraldine R. Dill*



---

**Judy Burvan** - December 13, 2015 at 08:54 AM

DG

“ *Deana & Estel George lit a candle in memory of Geraldine R. Dill*



**Deana & Estel George** - December 13, 2015 at 07:39 AM

MA

“ *Mary Alberts lit a candle in memory of Geraldine R. Dill*



**Mary Alberts** - December 12, 2015 at 10:32 PM

JM

“ *Janice Malchow lit a candle in memory of Geraldine R. Dill*



**Janice Malchow** - December 12, 2015 at 10:26 PM

BM

“ *Beverly Macke lit a candle in memory of Geraldine R. Dill*



**Beverly Macke** - December 12, 2015 at 09:25 PM

BM

*Remembering Aunt Geraldine makes me smile because she was such a fun lady. I am so sorry and sad that she has died. My heartfelt sympathy goes to her family. You are all in my thoughts and prayers. You have great memories of her to help you through. Take care.*

*Love,  
Bev Macke*

---

**Beverly Macke** - December 12, 2015 at 09:34 PM

DW

“ *Our deepest sympathy to all of you. May the hand of God and your many precious memories sustain you through this difficult time.*



---

**Don & Gloria Waymouth** - December 12, 2015 at 07:26 PM

MW

“ *I worked with Geraldine at the Clinic of Family medicine many years. She was a classy lady and I enjoyed working with her. So sad to hear of her passing.*

---

**Marge Wealing** - December 12, 2015 at 06:24 PM